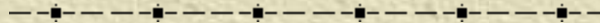




# *Legislation & The West*



## *The Main Idea*

✦ The Homestead Act  
opened up the Great  
Plains for many people to  
settle on which helped  
Westward Expansion.

## *The Homestead Act (1862)*

- ✦ Offered free land to Americans to settle in the Great Plains.
- ✦ It encouraged people to start their own lives and make a fortune in the west.



508

252 E 10



## *The Morrill Act (1862)*

✦ Gave public lands to build colleges and universities which would benefit agriculture and mechanical arts.

✦ A&T, A&M, State Universities



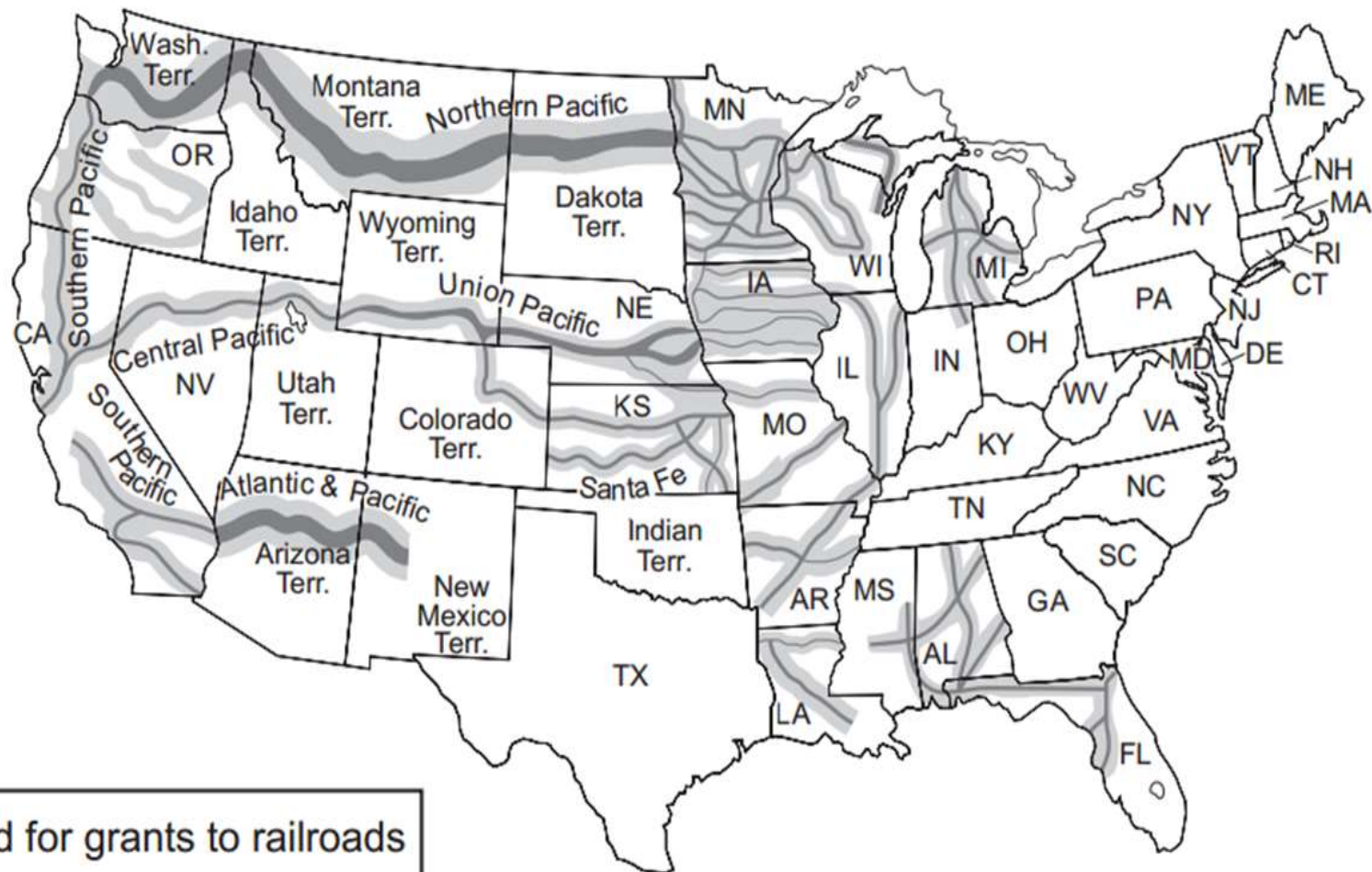
# *Pacific Railway Act*

- ✦ An Act to aid in the Construction of a Railroad and Telegraph Line from the Missouri River to the Pacific Ocean. . . .
- ✦ Gave land to build a transcontinental railroad across the country.
- ✦ <https://www.youtube.com/watch?v=0CdAzizWiyI>



## Federal Land Grants to Railroads as of 1871

Besides land, the government provided loans of \$16,000 for each mile built on level land, \$32,000 for each mile built on hilly terrain, and \$48,000 for each mile in high mountain country.



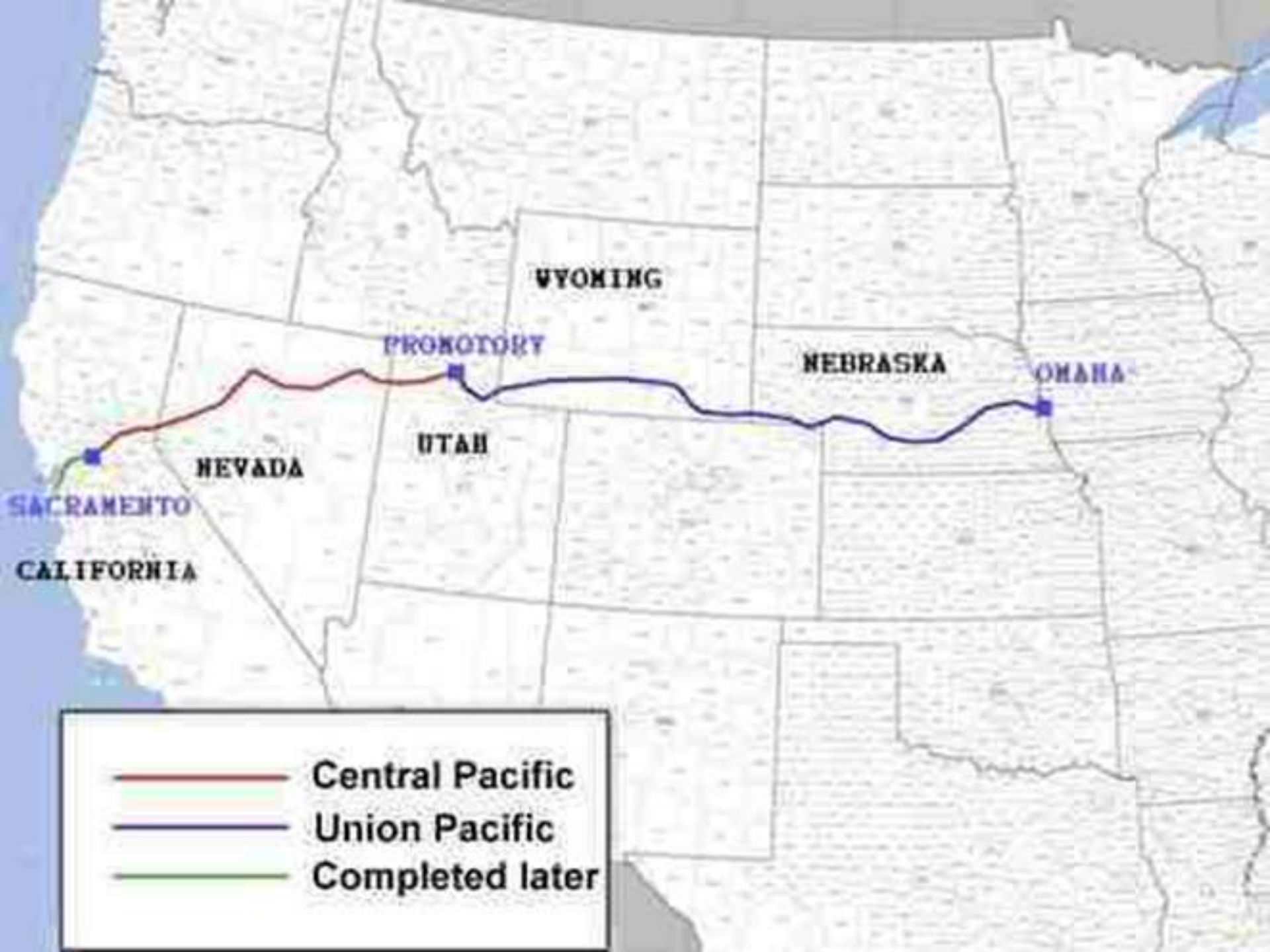


# *Impact of the Transcontinental Railroad*

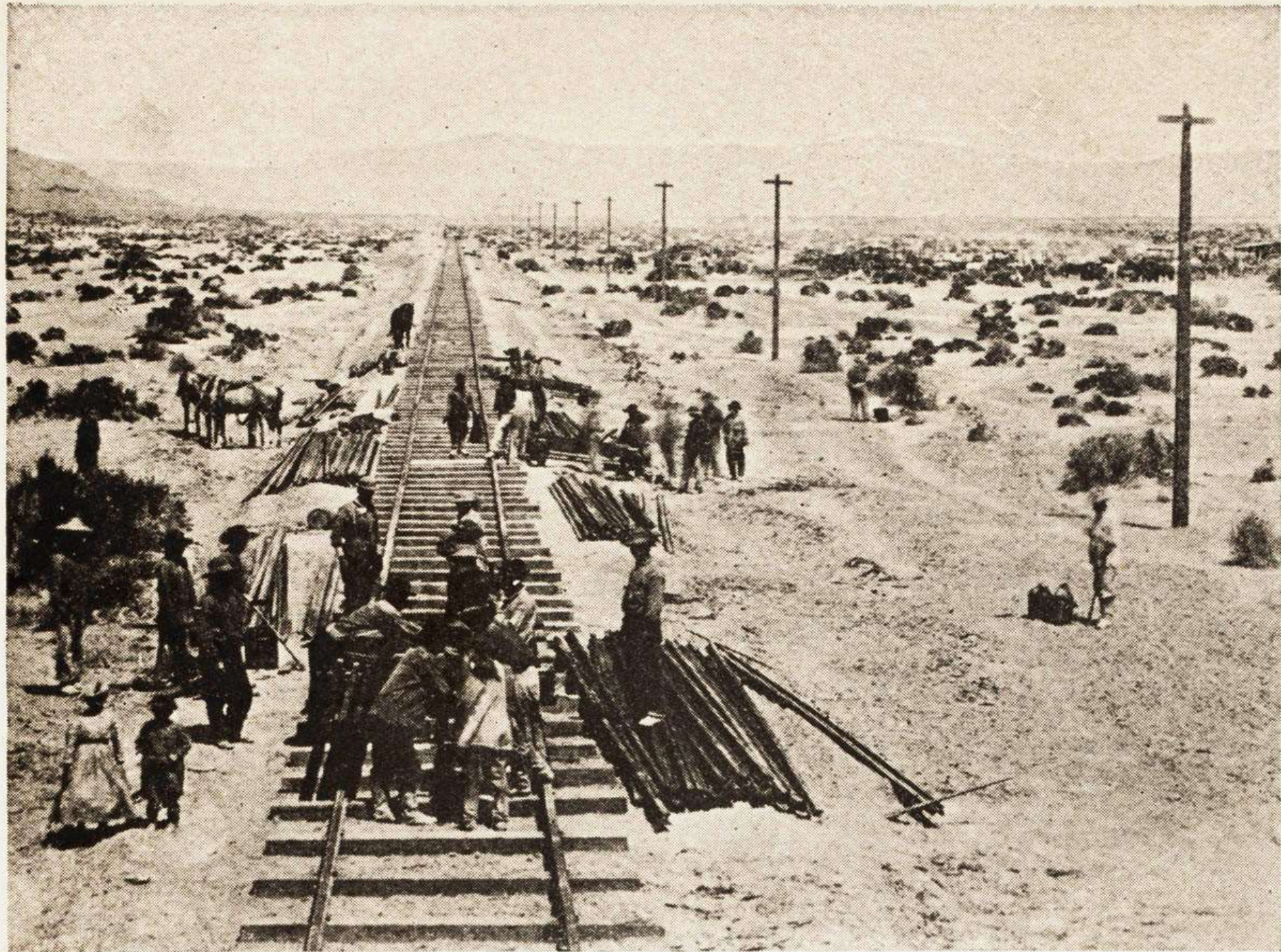
✦ It allowed for the  
creation of a  
nationwide market and  
the expansion of the  
U.S. economy.

# *The Transcontinental Railroad*

- ✦ Railroad that went across the country (East to West), finished in 1869.
- ✦ More railroads began being built further connecting and expanding the country.
- ✦ Irish, German, English, African American, and Native American workers.



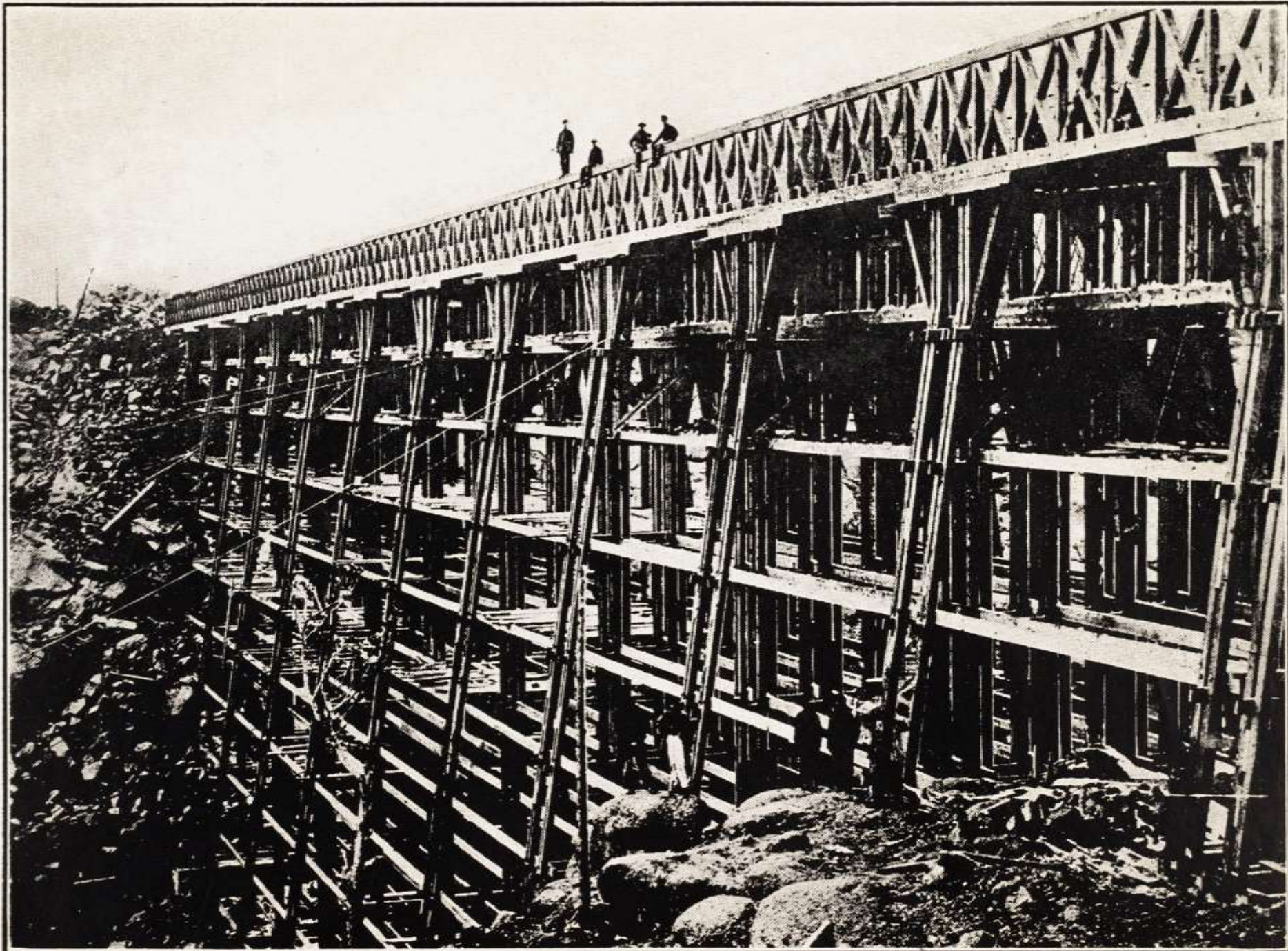




















# **Great Plains Homesteaders**

---



# Great Plains


---




*AKA "Great American Desert"*

# Homestead Act (1862)

**Uncle Sam Will  
Give You a Home**



IN THE  
**FLATHEAD INDIAN  
RESERVATION**  
WESTERN MONTANA



Directly on the Line of the  
Northern Pacific Railway

*1909 ad for land under the  
Homestead Act*

**FREE HOMES IN MINNESOTA.**

BUREAU OF STATISTICS, }  
St. Paul, May, 1862 }

EDITOR DEMOCRAT:—Under the Homestead Law recently passed by Congress, Minnesota offers to free settlement a much larger area of public lands, and better adapted to successful agriculture in soil, climate and situation relatively to the great avenues of inland commerce, than any other Western State.

Minnesota contains 53,760,000 acres of land. Of this the whole area appropriated by settlement or purchase is about 6,500,000 acres, and there are 8,360,000 acres of School Lands, leaving 43,900,000 acres still open to free settlement under the operation of the Homestead Law.

Three quarters of this surface consists of rolling prairie, interspersed with frequent groves, oak openings and belts of hard wood timber, watered by numberless lakes and streams, and covered with a warm, dark soil of great fertility. The rest, embracing the el-

*1862 article in the St. Cloud  
Democrat*



# Pacific Railway Act (1862)

PRODUCTS WILL PAY FOR LAND AND IMPROVEMENTS!

## MILLIONS OF ACRES

View as the Big Map, between Council and Omaha, representing Valley and Rolling Prairie Land in Nebraska.



### IOWA AND NEBRASKA

# LANDS

FOR SALE ON **10 YEARS CREDIT**

BY THE

## Burlington & Missouri River R.R. Co.

AT 6 PER CT. INTEREST AND LOW PRICES.

Only One-Seventh of Principal Due Annually, beginning Four Years after purchase.

20 PER CENT. DEDUCTED FROM 30 YEARS PRICE, FOR CASH.

**LAND EXPLORING TICKETS SOLD**  
and Cost allowed in First Interest paid, on Land bought in 30 days from date of ticket.  
These are Land Tickets **10 CENTS A YEAR** in the State where the Land bought is located.  
These **TERMS are BETTER** at \$5.00 than in any other State. Land at \$2.50 per Acre.  
EXTRAORDINARY INDUCEMENTS OF FREIGHT and PASSAGE are AFFORDED TO PURCHASERS and THEIR FAMILIES.

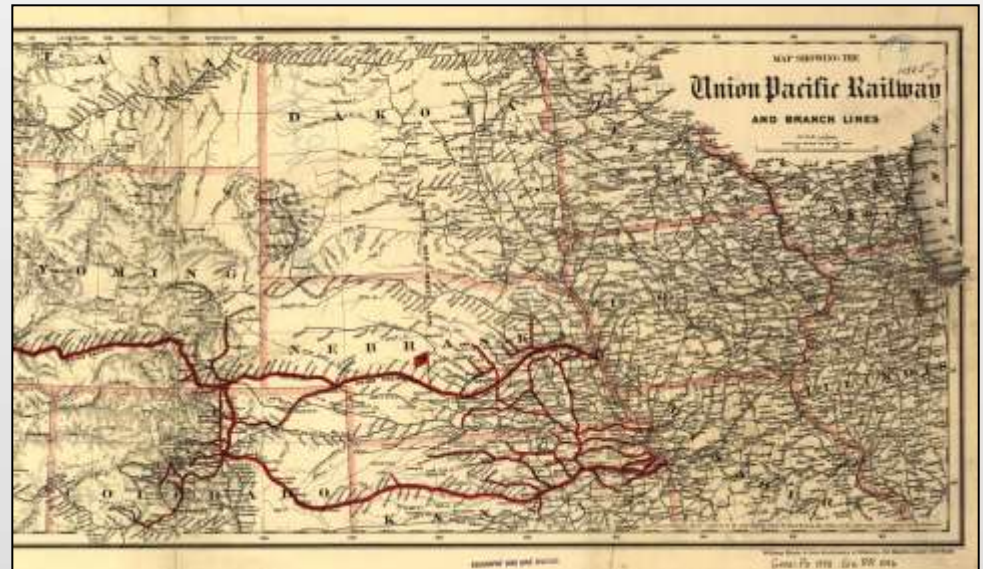
Address **GEO. S. HARRIS, LAND COMMISSIONER,**  
or **T. H. LEAVITT, Ass't Land Comm'r,** Burlington, Iowa.

Or apply to

FREE ROOMS for buyers to board themselves are provided at Burlington and Lincoln.

CIRCULARS are mailed GRATIS for distribution in ORGANIZING COLONIES and to induce individuals to emigrate WEST.

A SECTIONAL MAP showing exact locations of our IOWA LANDS is sent for 20 Cents, one of NEBRASKA LANDS for 30 Cents.



Map of Union Pacific rails in the Great Plains in 1888.

An 1872 advertisement from a railroad for inexpensive land for sale in Iowa and Nebraska in

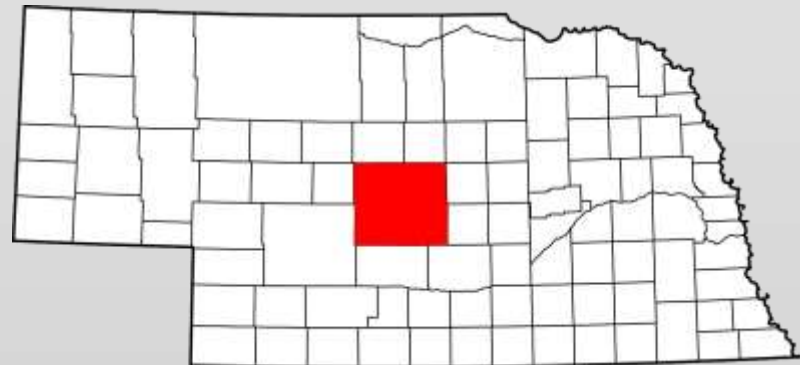


# Solomon D. Butcher

---



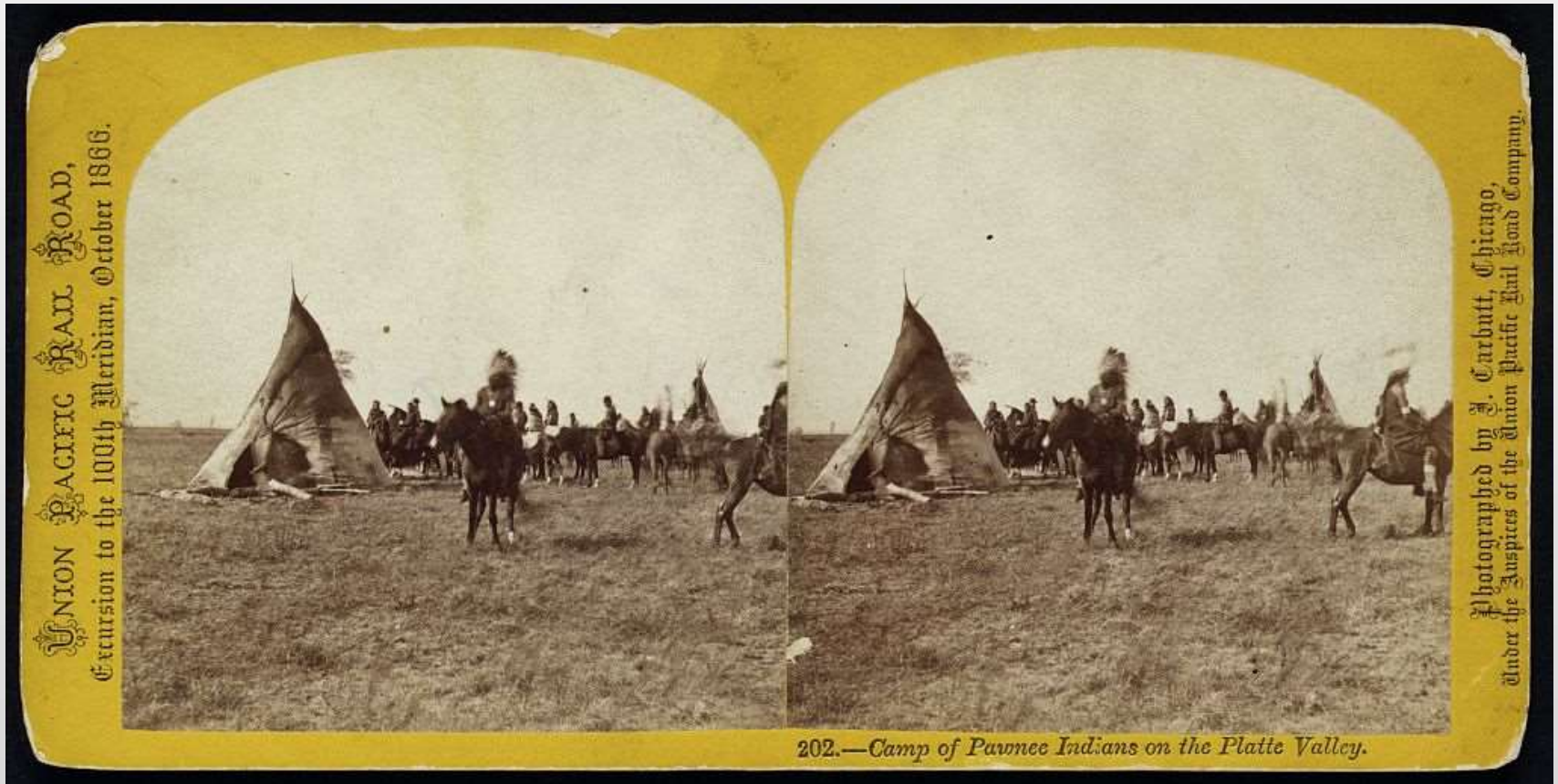
*Butcher in 1886*



*Custer County, Nebraska*

# Displacement of the Pawnee

---



*A Pawnee encampment in 1866*

## Central Historical Question

*What can Solomon Butcher's photographs tell us about life for homesteaders on the Great Plains in the 1880s?*



# Order of Operations

---

- Complete the Westward Expansion Document Analysis.